

# One Idea. One Country. One Chapter. Welcome to PMI Germany Chapter e.V.



PMI Germany Chapter e. V.



# Contents

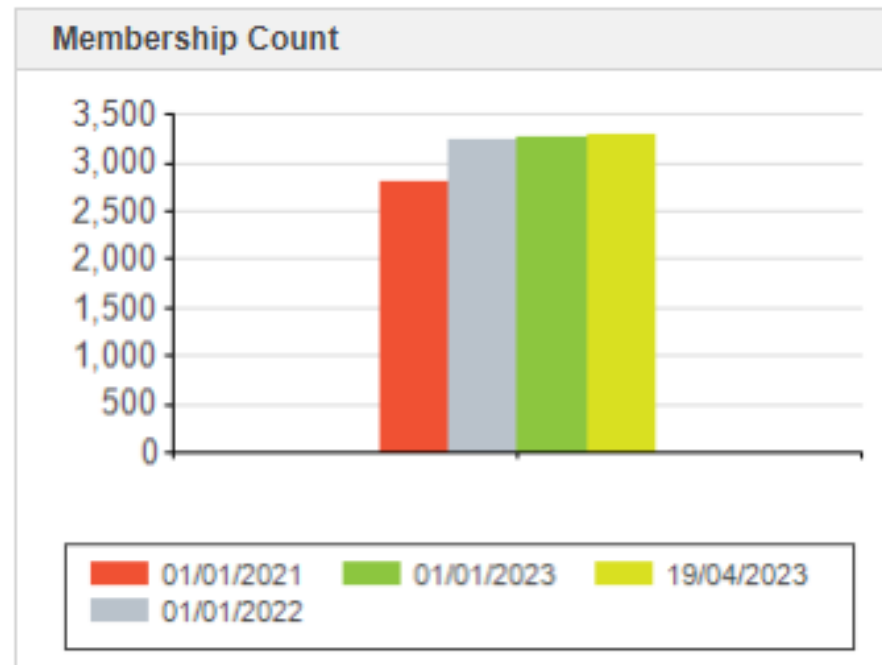
- PMI Germany Chapter – Origins, Facts and Figures
- Benefits – Advantages of becoming a PMI Member
- Chapter Governance – How do we reach the Benefits for our Chapter Members
- Communication – Internal and External Channels
- Tips for your membership

# The PMI Germany Chapter

- PMI was founded in 1969 in Philadelphia. Today, it has members in almost all countries of the world.
- The PMI Germany Chapter is a [registered association](#) and is not for profit even if not officially recognized as such.
- The [PMI Germany Chapter](#) was registered in the Berlin-Charlottenburg Register of Associations on Sept. 26, 2019, and the merger was registered on Dec. 21, 2020. Prior to that was a 30-year history with four chapters in Germany.
  - The Chapters PMI Southern Germany, Frankfurt and Berlin/Brandenburg merged in a complex process to form the [PMI Germany Chapter](#).
  - The former Cologne Chapter did not participate in the merger. Their successor organization is PMG-G (Project Management Group - Germany) and does not belong to PMI. Many former members of the Cologne Chapter joined the Germany Chapter. Membership in both organizations is possible.
- The size of the PMI Germany Chapter is an [extensive and attractive offering](#).
- Regional [local groups](#) provide [personal contacts, exchange, and networking](#).
- [Communities of Practice \(CoPs\)](#) enable [professional exchange](#), regionally and across regions.

# PMI Germany Chapter – Progressively Increasing

## Membership



# PMI Chapter — One Strong Community

## PMI Zahlen, Daten und Fakten / PMI Numbers, dates and facts



**725.489 Mitglieder**  
Members

**1.676.438 Zertifizierungen**  
Certifications

**232 Länder**  
Countries

**304 Chapter**

**11.000 Ehrenamtlich tätige**  
Volunteers

Stand: 31.03.2024

## PMI Mitglieder & PMPs / PMI Members, Chapter Members and PMPs

	Germany Chapter	National	Global
<b>Mitglieder / Members</b>	<b>3.522</b>	<b>10.925</b>	<b>725.489</b>
<b>Chapter Mitglieder / Chapter Members</b>	<b>3.522</b>	<b>3.522</b>	<b>316.901</b>
<b>PMP</b>	<b>2.442</b>	<b>17.031</b>	<b>1.492.769</b>
<b>CAPM</b>	<b>103</b>	<b>1.415</b>	<b>66.996</b>
<b>PgMP</b>	<b>22</b>	<b>65</b>	<b>5.925</b>
<b>PMI-SP</b>	<b>4</b>	<b>27</b>	<b>3.449</b>
<b>PMI-RMP</b>	<b>27</b>	<b>112</b>	<b>17.521</b>
<b>PMI-ACP</b>	<b>170</b>	<b>819</b>	<b>102.370</b>
<b>PfMP</b>	<b>7</b>	<b>23</b>	<b>2.409</b>
<b>PMI-PBA</b>	<b>19</b>	<b>67</b>	<b>7.639</b>
<b>DASM</b>	<b>42</b>	<b>126</b>	<b>5.589</b>
<b>DASSM</b>	<b>32</b>	<b>59</b>	<b>2.955</b>
<b>DAC</b>	<b>5</b>	<b>5</b>	<b>225</b>
<b>DAVSC</b>	<b>3</b>	<b>5</b>	<b>139</b>
<b>VSM</b>	<b>6</b>	<b>7</b>	<b>159</b>
<b>OTO</b>	<b>2</b>	<b>10</b>	<b>438</b>
<b>OTI</b>	<b>5</b>	<b>14</b>	<b>559</b>
<b>OTF</b>	<b>16</b>	<b>48</b>	<b>1.691</b>
<b>ECC</b>	<b>5</b>	<b>9</b>	<b>1.052</b>
<b>CD-MC</b>	<b>3</b>	<b>24</b>	<b>804</b>
<b>CDBA</b>	<b>2</b>	<b>11</b>	<b>316</b>
<b>BETI</b>	<b>2</b>	<b>4</b>	<b>591</b>
<b>BEPM</b>	<b>4</b>	<b>8</b>	<b>478</b>
<b>AM-MC</b>	<b>8</b>	<b>17</b>	<b>592</b>
<b>AH-MC</b>	<b>38</b>	<b>110</b>	<b>3.633</b>
<b>Zertifizierungen</b>	<b>2.967</b>	<b>20.016</b>	<b>1.676.438</b>
<b>Länder</b>			

### Abkürzungen/Abbreviations:

PMP: Project Management Professional®, CAPM: Certified Associate in Project Management (CAPM)®, PgMP: Program Management Professional (PgMP)®, PMI-SP: PMI Scheduling Professional (PMI-SP)®, PMI-RMP: PMI Risk Management Professional (PMI-RMP)®, PMI-ACP: PMI Agile Certified Practitioner (PMI-ACP)®, PfMP: Portfolio Management Professional (PfMP)®, PMI-PBA: PMI Professional in Business Analysis (PMI-PBA)®, DASM: Disciplined Agile Scrum Master (DASM), DASSM: Disciplined Agile Senior Scrum Master (DASSM), DAC: Disciplined Agile Coach (DAC), DAVSC: Disciplined Agile Value Stream Consultant (DAVSC), VSM: Value Stream Management Micro-Credential, OTO: Organizational Transformation Orchestration, OTI: Organizational Transformation Implementation, OTF: Organizational Transformation Foundation, ECC: Built Environment Project Communication Pro, CD-MC: Citizen Developer Practitioner, CDBA: PMI Citizen Developer Business Architect, BETI: Built Environment Technology and Innovation Pro, BEPM: Built Environment Performance and Material Management Pro, AM-MC: Agile Metrics Micro-Credential, AH-MC: Agile Hybrid Project Pro

Stand: 31.03.2024

The numbers are changing, but up-to-date values can be found at:

<https://pmi-gc.de/das-chapter/pmi>

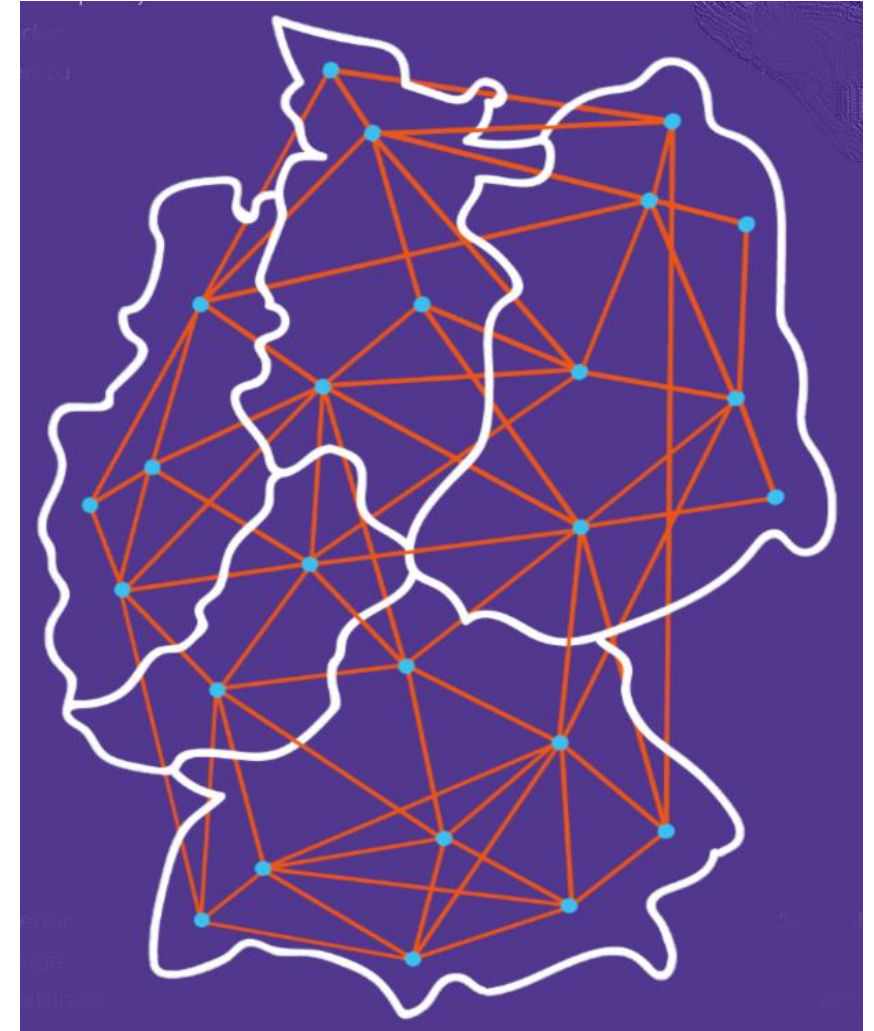
<https://www.pmi.org/membership>

# Composition of the PMI Germany Chapter

- Five regions (administratively).

*Supporting organizational level that assists local groups in their tasks.*

- Around 25+ local groups (where activities take place)  
*Interaction space of members and volunteers. Activities for and with members and volunteers take place here. Events, projects, initiatives, meetings.*
- Approx. **10,500 PMI members in Germany**, including:
  - Approx. 3,500 Germany chapter members
  - Approx. 150 volunteers (the core of the chapter)





# A Multinational Chapter

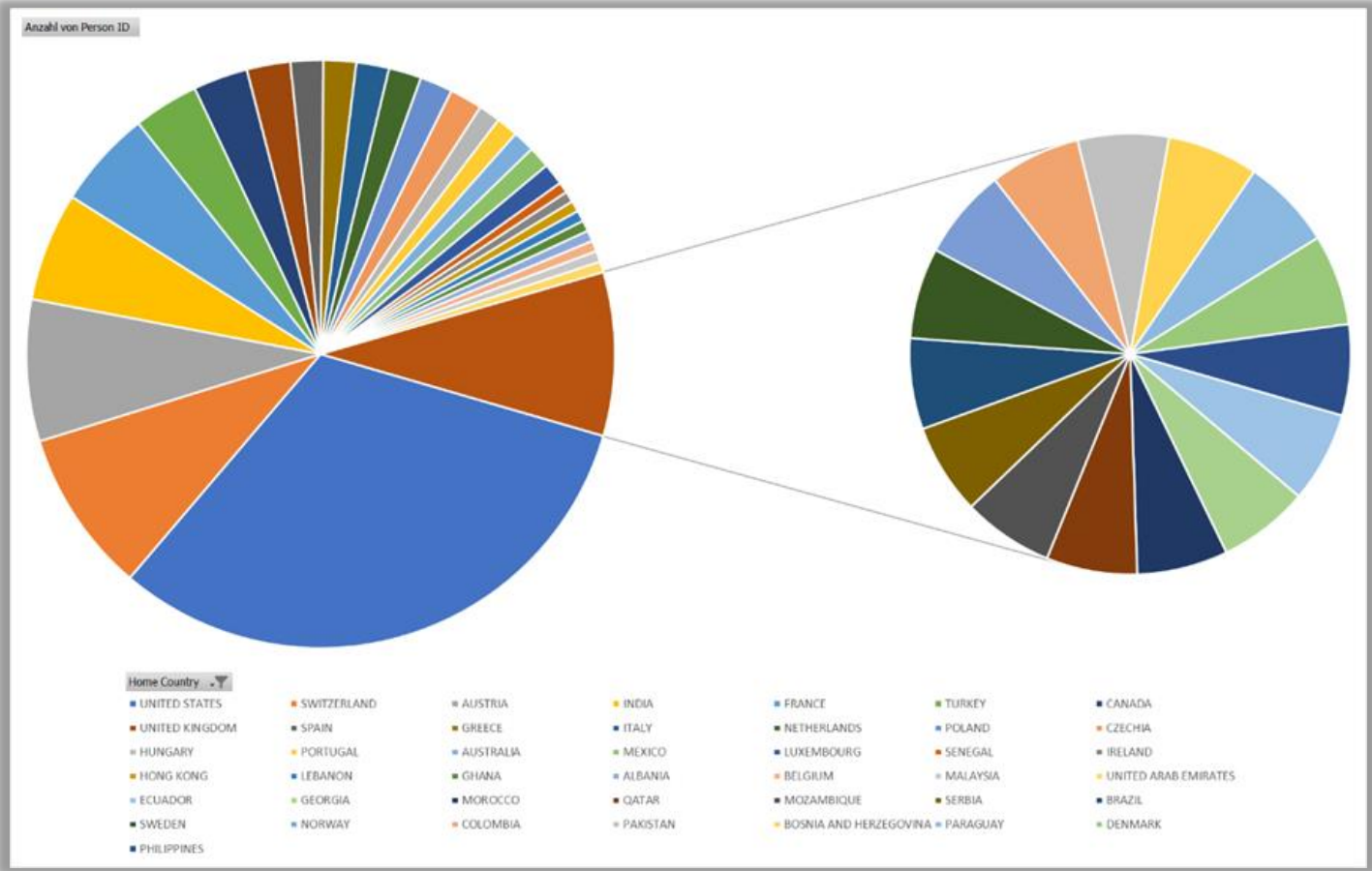
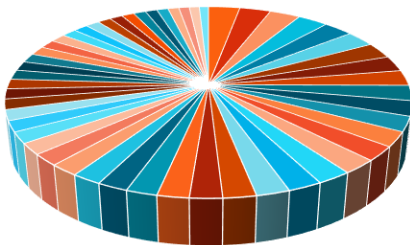


Table: Countries with more than 3 members, data status: 04.11.2022, data source: PMI

Home Country	Number of Members
GERMANY	3042
UNITED STATES	53
SWITZERLAND	15
AUSTRIA	13
INDIA	10
FRANCE	9
TURKEY	6
CANADA	5
UNITED KINGDOM	4

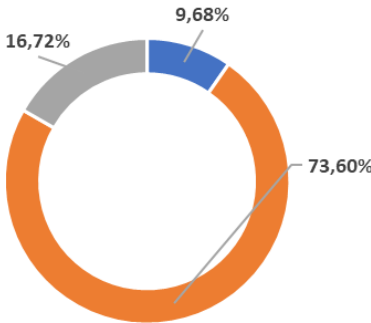
# A Diverse Chapter

Age



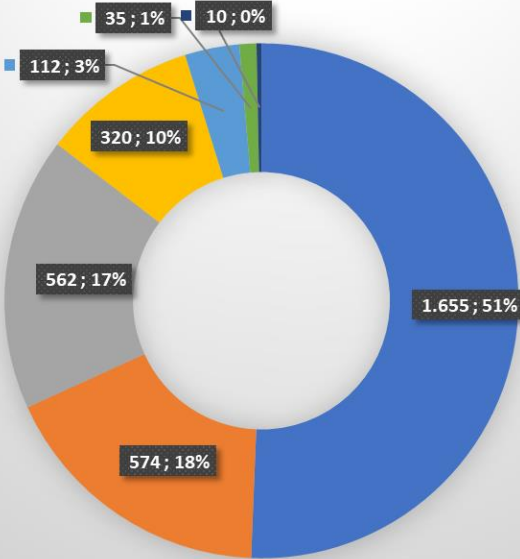
76 75 74 73 72 70 69 68 67 66 65 64 63  
62 61 60 59 58 57 56 55 54 53 52 51 50  
49 48 47 46 45 44 43 42 41 40 39 38 37  
36 35 34 33 32 31 30 29 28 27 26 25 24

Percentage by Sex



N.N. Male Female

Numbers by Age Group



K.A.  
51-60  
41-50  
31-40  
61-70  
21-30  
>70

Data date: 02.02.2023;  
Source: <https://pmi.thoughtspot.cloud/>



# Benefits – Advantages for Chapter Members



**Worldwide** Network of passionate Project Managers +

**Local** Network of 27 (!) Local Groups



Nationwide discounts at Chapter Events and partner events



Monthly Newsletter  
Quarterly Chapter Magazine



Additional benefits and discounts from our Sponsors and other Organizations  
>>> Marketplace on website



- Participation in **Members-only Events**
- Contribution to chapter projects
- Annual Volunteer Event
- Participation in Member only programs:
  - Female Empowerment Program,
  - Mentoring Program,
  - Social Responsibility Program,
  - Youth Empowerment Program
- Webinars – continuous learning



Participation in our Communities of Practice (CoPs) and in interest groups of partners



University Circle with valuable contacts to universities as well as other interesting Circles on topics such as diversity, social responsibility, etc.

# As a Member, you are eligible to join various Local Groups

## Make an Impact!

### Region North:

LOCAL GROUP HAMBURG  
LOCAL GROUP HANNOVER  
LOCAL GROUP BREMEN  
LOCAL GROUP BRAUNSCHWEIG/WOLFSBURG

### Region East:

LOCAL GROUP BERLIN  
LOCAL GROUP LEIPZIG  
LOCAL GROUP DRESDEN  
LOCAL GROUP THURINGIA (Erfurt)  
LOCAL GROUP NORDOST (Rostock)

### Region West:

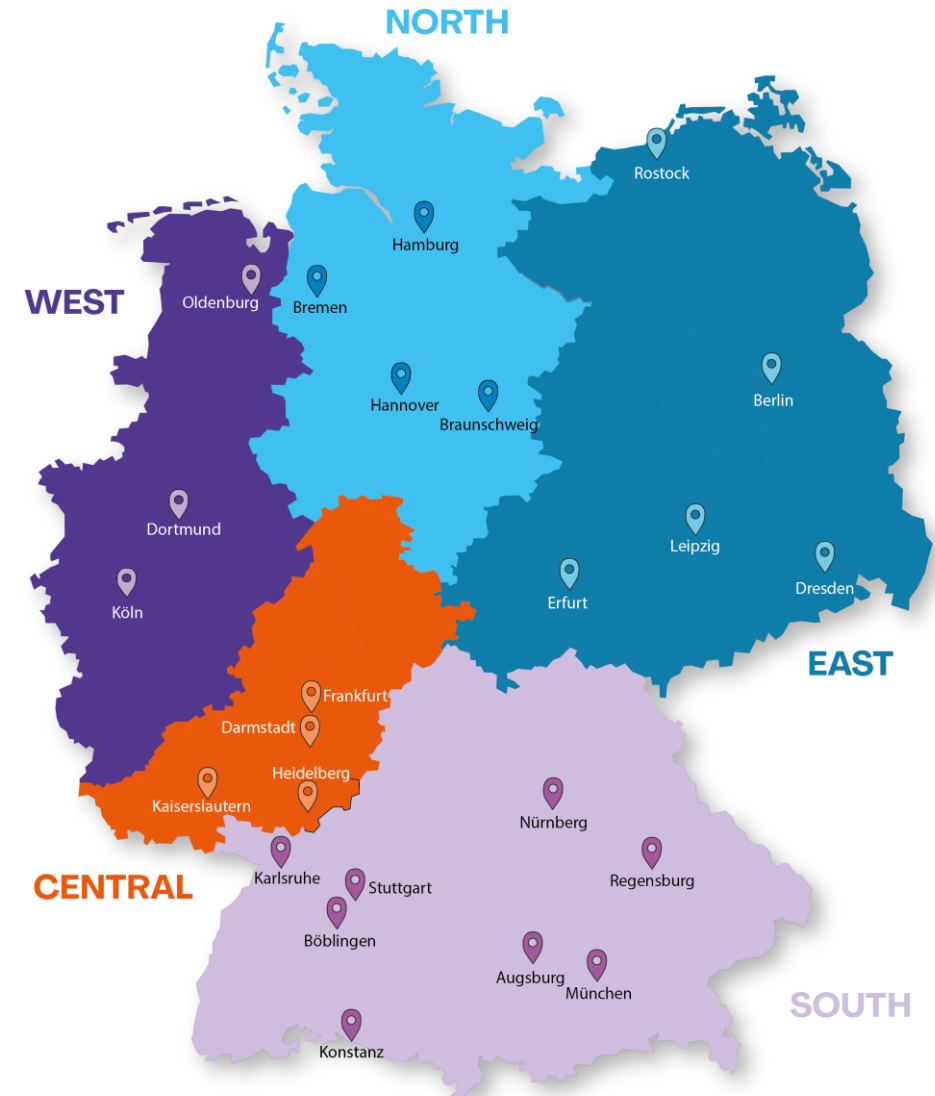
LOCAL GROUP RUHRGEBIET (Essen)  
LOCAL GROUP RHEINLAND (Cologne)  
LOCAL GROUP WESER-EMS (Oldenburg)

### Region Central:

LOCAL GROUP RHEIN-NECKAR/ HEIDELBERG (Heidelberg)  
LOCAL GROUP SOUTHWEST (Kaiserslautern)  
LOCAL GROUP RHEIN-MAIN (Frankfurt)  
LOCAL GROUP DARMSTADT

### Region South:

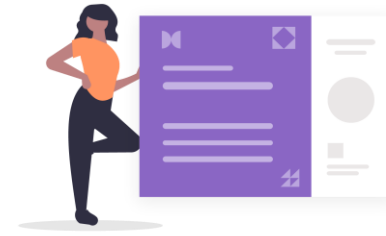
LOCAL GROUP STUTTGART  
LOCAL GROUP MUNICH  
LOCAL GROUP REGENSBURG  
LOCAL GROUP NUREMBERG  
LOCAL GROUP AUGSBURG  
LOCAL GROUP KARLSRUHE  
LOCAL GROUP KONSTANZ  
LOCAL GROUP BOEBLINGEN



<https://pmi-gc.de/en/community-2/local-groups-eng>

## ... plus offers from PMI

- ❖ Interact with other members, credential holders, and volunteers around the world. That's 700,000+ cool people like you.
- ❖ Enjoy free access to the many ways of earning PDUs.
- ❖ Access to ready-to-use tools and templates to collect and manage project information.
- ❖ As member, informative and insightful publications to keep you abreast of the latest trends.
- ❖ Use knowledge sharing, volunteering, and networking opportunities at the local and global level/s.
- ❖ eDiscover, Learn & Connect on >>> Projectmanagement.com, the one-stop shop for project management answers.
- ❖ Access to >>> PMI's global standards including a digital edition of A Guide to the Project Management Body of Knowledge (PMBOK Guide) – Seventh Edition, and on top free access to PMI Standards+™

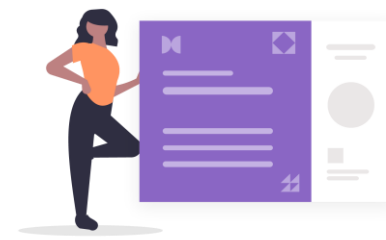


- ❖ Access to Career coaching, a feature of PMI's job-searching site, The Project Management Job Board.
- ❖ Get special prices on PMI credential exams and renewal, conferences, seminars, books, products, and training tools is offered through PMI Store.
- ❖ Access to a library of webinars, addressing project management trends, best practices, how-to guides, and much more.

Seriously, what are you waiting for? Visit the website at [www.pmi.org/Membership](http://www.pmi.org/Membership) and join today.

# ... and for students?

- ❖ Download the PMBOK® Guide for free
- ❖ Save on career-advancing certifications
- ❖ Tap into a local and global community of professionals
- ❖ Power up your skills with on-demand webinars and insights
- ❖ Stay ahead of deadlines using 1,000+ free tools and templates
- ❖ Unlock access to real-world insights and opportunities
- ❖ Let PMI be your guide
- ❖ **And enjoy all chapter member benefits as described before**

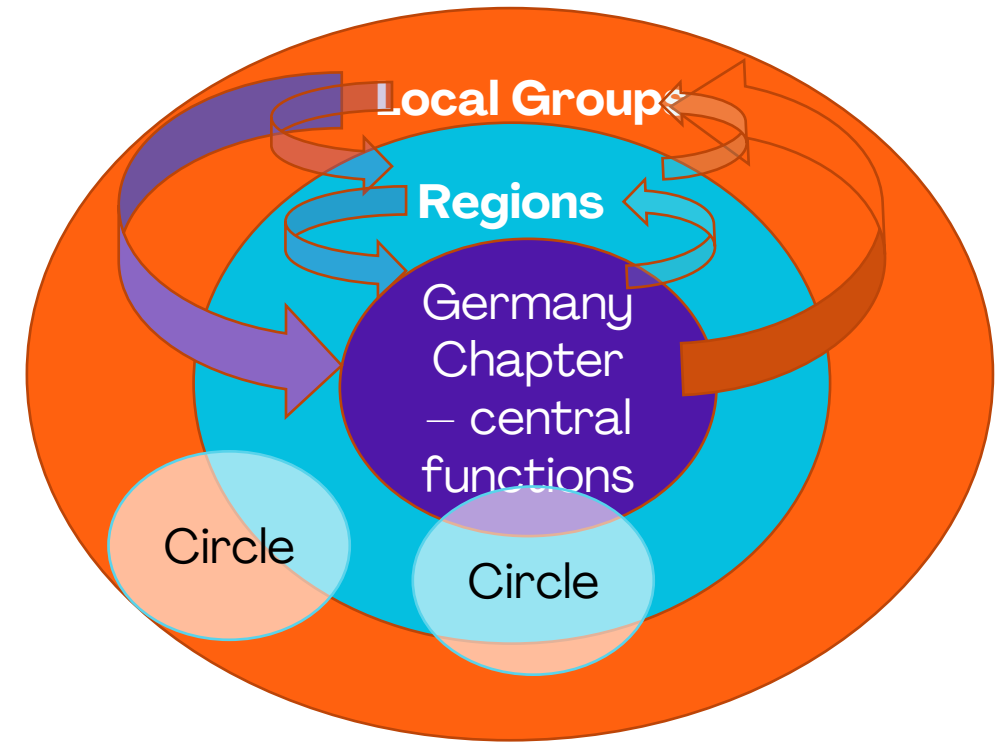


- ❖ For only 32 US-\$ per year:
  - PMI Membership
  - PLUS Chapter Membership in the PMI Germany Chapter

Seriously, what are you waiting for? Visit the website at <https://www.pmi.org/membership/student> and join today.

# Organization of the Chapter

- ❖ Responsibility for tasks of the Chapter for strategy implementation and achievement of its goals is broken down to the resorts described in the **Association Rules**.
- ❖ To support this, there are **Circles**, **Local Groups** and **Projects**. **Circles**, **Local Groups** and **Projects** are the organizational elements of the Chapter to implement its strategy and tasks.
  - ✓ **Circles** can be located within a resort or operate across several functions; responsibility for a Circle is assigned to one resort in each case.
  - ✓ **Local Groups** provide chapter services at the local level and are each assigned to a regional resort.
  - ✓ **Circles and Local Groups** are generally designed to be permanent. The closure of a Circle results from changes in strategy and tasks of the chapter.
  - ✓ **Projects** also serve the chapter's task fulfillment and strategy implementation. They are temporary in nature.



# Products/Services offered by the Chapter

- **Events**

where you as chapter member will be able to

- ✓ build a strong and varied national and international network,
- ✓ further development personally and professionally,
- ✓ learn in webinars on new trends on the profession,
- ✓ participate, share and learn on topics on your industry

- Events are organized by

- ✓ by Circles or
- ✓ by Local Groups or
- ✓ through a project

- **Communities of Practice**

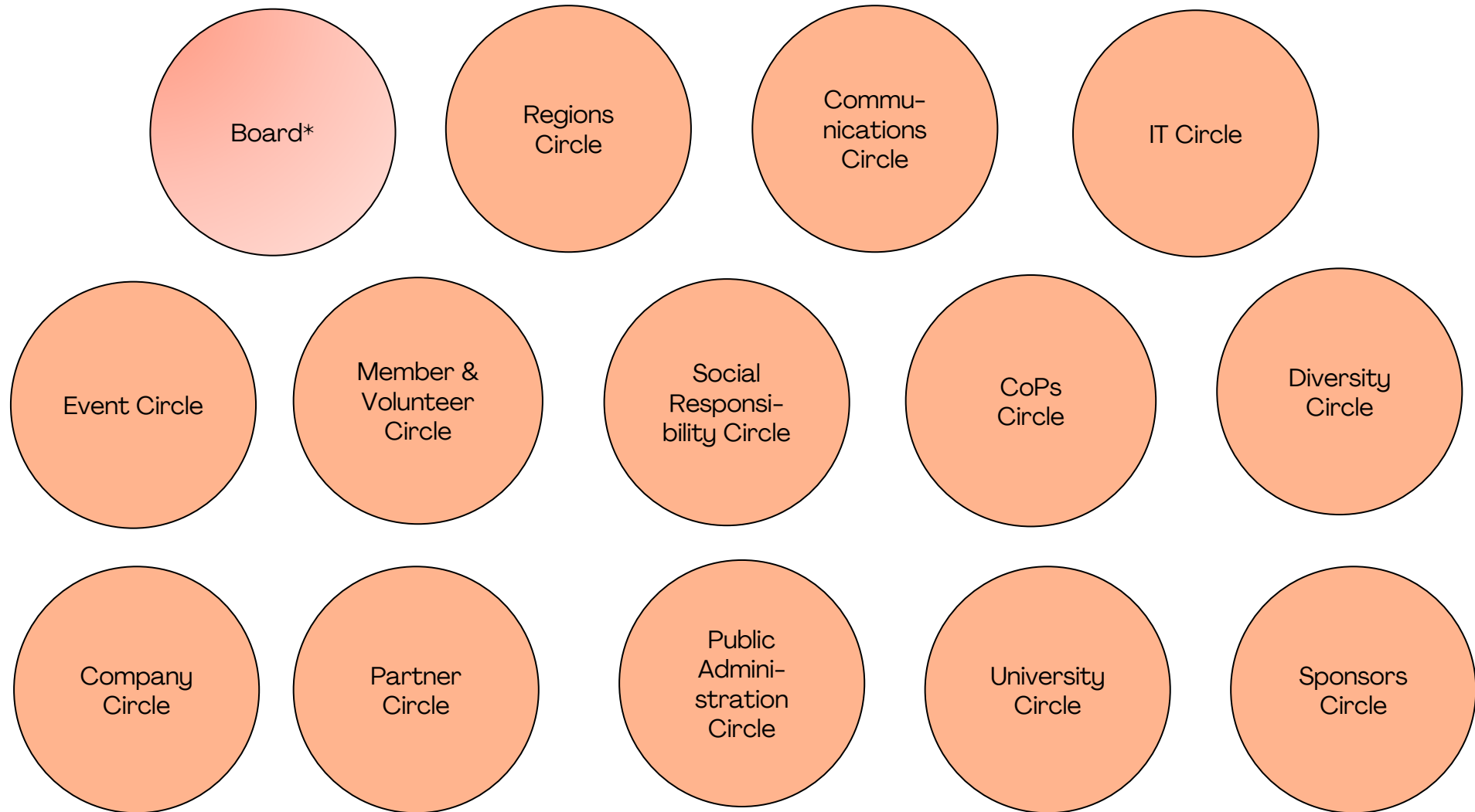
where you as chapter member will be able to

- contribute to a specific topic,
- share their knowledge,
- learn and expand one's knowledge,
- exchange ideas with others in the network and
- jointly produce results such as a white paper.

- Organization (specifications, resolution, etc.) is done by a Circle.



# Which are the different Circles where you could be part of and contribute?



\* only after candidacy and election of the Board of Directors

# What is a Community of Practice?



Group of enthusiastic Chapter members who

- **Exchange** ideas on practicable aspects in the respective "area"
- **Share** experiences through publications.

**Aim:** to generate new ideas and concepts for practical application, which can then be used in practice.

## Practice is in the Foreground

Every day, we are not in the ivory tower of theory, but try to find out and communicate which concepts, approaches or ideas work particularly well.

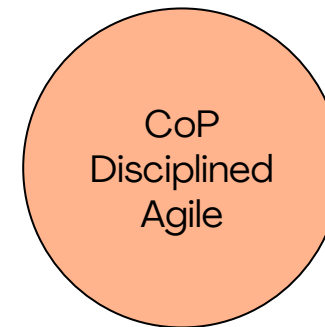
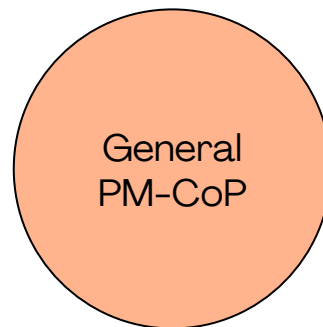
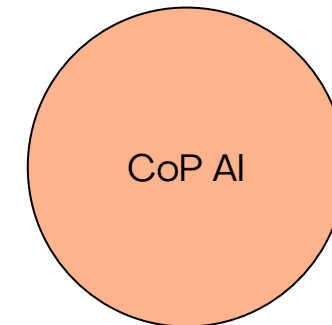
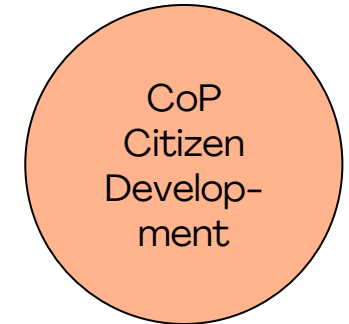
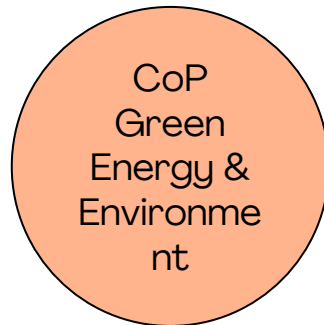
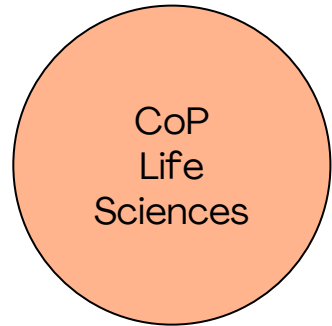
That is why the focus of a CoP should be on the "P" – namely "Practice".

## Hear the Podcast –

What is a CoP in general and how CoPs became a part of the Chapter:

[>>> Podcast with Vice President Members Jörg Glunde and Thomas Wuttke \(German\).](#)

# As Member you will be the Core of our Communities of Practice



# Chapter Governance

## Principles

- **Regional and Local Ownership:** Chapter activities take place mainly in the local groups. Local volunteers initiate and implement events and all other activities

Teams in the region with the **local groups are the foundation of the PMI Germany Chapter**. We focus on contributing to the network instead of striving for a position in the hierarchy.

→ **As much autonomy as possible, as few central functions, as necessary.**

→ **Regional service delivery is owned by the regions.**

- The Region Circle initiates, picks up, drives and supports activities in the local groups.
- We **communicate** transparently, with all stakeholders.
- We believe in the idea of **servant leadership**. Servant leadership follows the idea to develop the target group in a positive way in order to enable them to make a positive contribution and to achieve the goals set. Reference: <https://www.greenleaf.org/what-is-servant-leadership/>.
- Our **appreciation** is dedicated to the time and energy that **volunteers contribute to deliver value and to ensure the future of our chapter**. We do not want to overburden the self-commitment of members, but rather recognize the contributions of volunteers for the benefit of the chapter and PMI, as well as the project management profession.
- With **mutual respect and observing ethical principles**, we support applying the ethical principles according to the PMI Code of Ethics and being open to others (diversity).

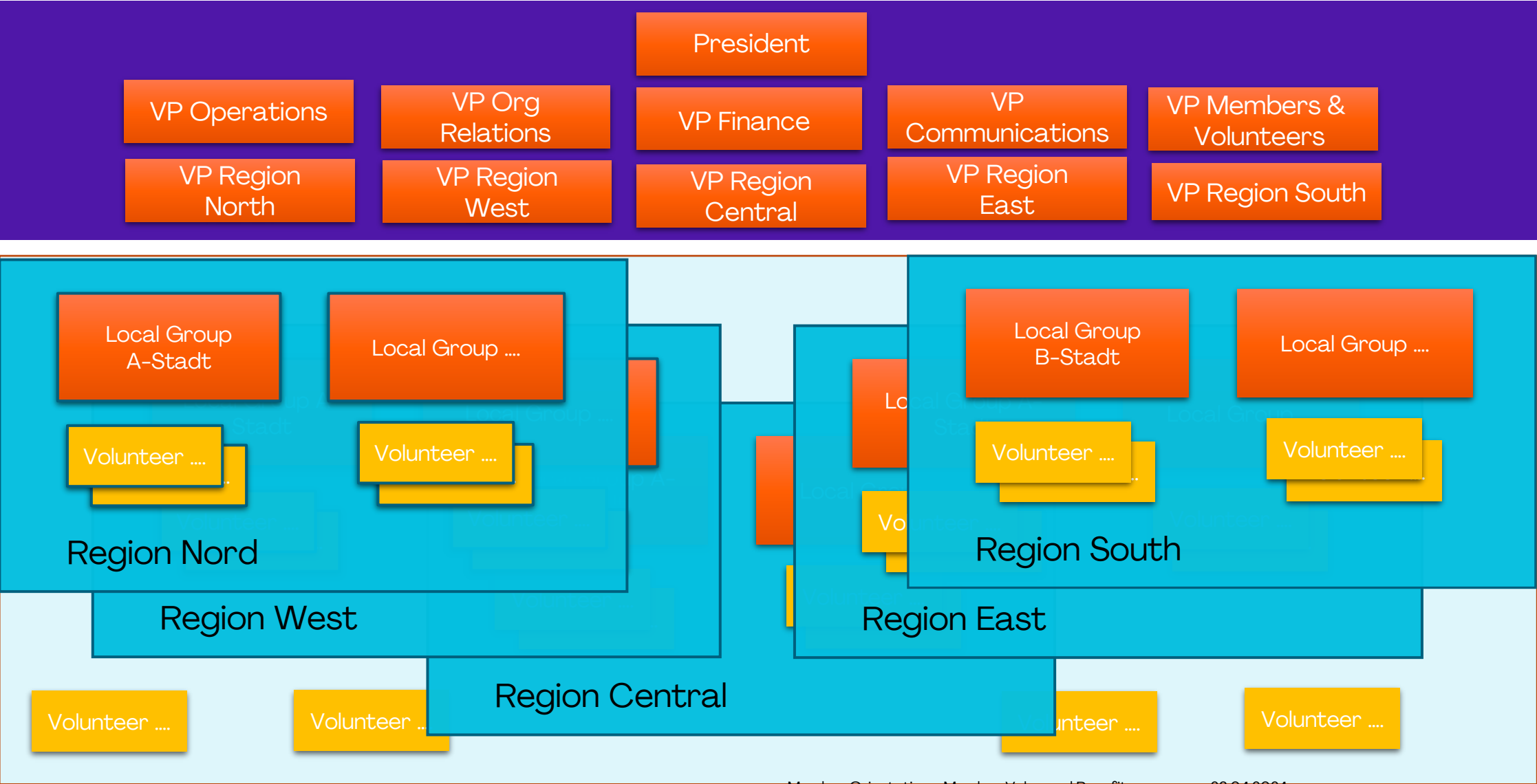
# Chapter Governance

## Organisation and Leadership

- The association is represented and managed by a board with 11 current members (between five and 15 are possible).
- The board is **elected for a period of three years** by the general meeting; re-election of members is possible.
- The board assigns **volunteers** to various roles as needed to accomplish tasks. Volunteers do not have a fixed term of office. However, "commitments" are expected to be met.
- The Board is supported by other volunteers and by **Circles** (working groups), which can be established permanently or temporarily.
- Each region has a **Leadership Team** that initiates and coordinates regional activities. The regional leadership team is headed by a board member responsible for the region. The leadership team is staffed according to regional requirement criteria and current activities.
- The **Local Groups** provide the "tangible environment" for members:  
"Where the rubber meets the road" → events, working groups, personal contacts.
- A **Local Group is coordinated by a volunteer** who is a member with the regional leadership team or works closely with it.

# Governance

## Organization





# Share your Talent by Volunteering @ PMI Germany Chapter



As Volunteer of our Chapter, you will:

- Develop in your profession
- Try out and get to know new things
- Strengthen your self-confidence
- Advance the best and coolest way of working to shape our future
- Do something meaningful
- Build your global network with like-minded professionals.
- Expand your leadership experience and skills.
- Earn PDU's credit towards your PMI re-certification.
- Be able to document your involvement in PMI's Volunteer History.

# Our Opportunities for you: Volunteering @ PMI Germany Chapter



- Congress Organisation
- Local Groups: Event organization
- Communication Experts
- PM-Coaching for NGOs
- Mentoring and Empowerment Programs
- Support Diversity activities
- And many More

More information:

[>> Volunteering in general](#)

[>> Volunteering Opportunities](#)

[Contact: volunteering@pmi-gc.de](mailto:volunteering@pmi-gc.de)

# Channels: Communications

Members and interested contributors have many available communication channels – reading or writing:

- ✓ In the Chapter Magazine with exciting topics from the Germany Chapter
- ✓ via the social channels
- ✓ via National and Regional Newsletters – the [Newsletter](#), a [summary](#) of the [latest developments and projects](#)



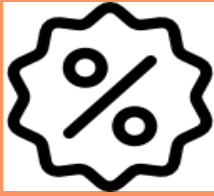
Come and stay in touch with us – Give our Community a voice!

Contact us at [info@pmi-gc.de](mailto:info@pmi-gc.de)

# Remember the Benefits – Remember your Advantages



Worldwide Network



Nationwide discounts at Events



Newsletter  
Chapter Magazine



Additional benefits and discounts >>> Marketplace on website



- **Members-only** Events
- Chapter Projects
- Volunteer Events
- Members-only programs (Empowerment, Mentoring)
- Webinars – continuous learning



Communities of Practice (CoPs) and interest groups of partners



Circles: University, Diversity, Social Responsibility, etc.

# Remember the Benefits – Remember your Advantages



Worldwide Network



Nationwide discounts at Events



Newsletter

Chapter Marketplace



- **Members-only Events**
- Chapter Projects
- Volunteer Events
- Members-only programs (Empowerment, Mentoring)
- Webinars for continuous learning

**Remember –  
with each activity in the chapter  
you are earning PDUs  
for maintaining your certification**



Activate your benefits and discounts >>> Marketplace on website



Circles: University, Diversity, Social Responsibility, etc.

# Finally... if you are already a Member, do not forget to ...

- According to the PMI membership process and to the bylaws of the PMI Germany Chapter:

No chapter membership without PMI membership.

PMI and chapter membership expiration dates are the same regardless of when you add one or more Chapters.

- Hence, **Renew your PMI and Chapter membership together** for more benefits.  
More information see link <https://www.pmi.org/membership/faq>
- PMI automatically turns off the [auto-renewal service](#) when the payment medium is changed, but the service cannot be activated in the 90 days before the expiry date due to the "restricted period"... - hence: enter new payment medium, renew membership, wait for new period, and activate auto-renewal again.
- For more information and application click <https://pmi-gc.de/en/join/member#for-pmi-members>





[www.pmi-gc.de](http://www.pmi-gc.de)